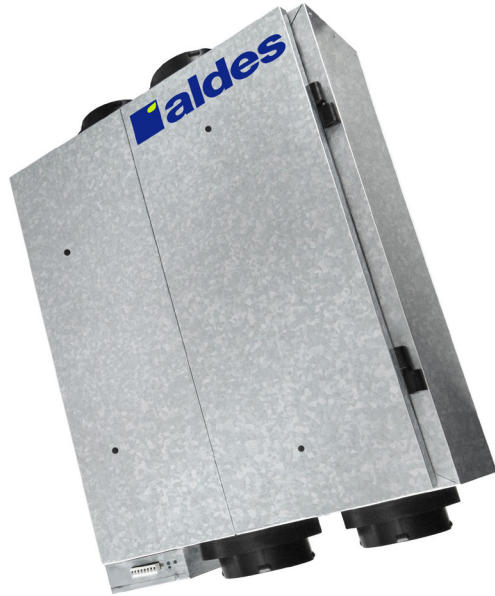




InspirAIR® COMPACT E80-HF-N Energy Recovery Ventilator

PRODUCT
SPECIFICATIONS
& TECHNICAL
DATA



PRODUCT DESCRIPTION

The energy efficient balanced in-suite ventilation solution ideal for multi-unit residential buildings, the E80-HF delivers superior heat recovery and a latent transfer of over 65% in a compact, easy-to-install package only 9 inches (230 mm) in height. Easily concealed in a drop-ceiling or soffit, this unit has been thoughtfully engineered for apartments, condominiums, and other dwellings.

The E80-HF exchanges **74 CFM** of air at 0.2 in.w.g (ESP), perfect for smaller dwellings in multi-unit residential buildings. The E80-HF includes Aldes' exclusive EvacMAX™ on-demand boost for maximum ventilation, and FLEXControl, electronic calibration that eliminates the need for balancing dampers and maximizes overall efficiency.

KEY FEATURES

- No drain required with Aldes' high performance HLT crossflow ERV core technology
- Up to 73% sensible recovery efficiency, a great choice for LEED-certified buildings
- Hassle-free balancing using the balancing chart, pressure taps in the door, and the independently adjustable supply and exhaust blowers (FLEXControl)
- Unique compact door allows easy access to the washable MERV 6 filters

APPROVALS

Meets Standards:

- C22.2 no113 and UL 1812
- HVI Certified



CASING

Material: 24-gauge galvanized steel
Drain Connection: None
Duct Diameter: 5" (127 mm)
Insulation: 1" (25 mm)
Width: 22" (559 mm)
Height: 9" (230 mm)
Depth: 27" (686 mm)
Weight: 37 lbs (17 kg); Shipping Weight: 42 lbs (19 kg)

MOUNTING

- Suspended above the ceiling by chains with vibration-isolating springs (included)
- Optional ceiling mount kit available for quick installation

RECOVERY CORE

High-Latent-Transfer fixed plate enthalpic core by Aldes

BLOWERS

Quantity: 2
Type: Motorized impellers (backward-inclined)

ELECTRICAL REQUIREMENTS

120 VAC, 60 Hz, 0.8 A, 144 W (MAX)
Hard-wired

CONTROLS

Low voltage (24 VAC) for:

- Digital Multifunction Control (P/N: 611242-FC)
- Humidity Control (P/N: 611224)
- Speed Control (P/N: 611229)
- 20/40/60 Minute Timer (P/N: 611228)
- External dry contact interlock for forced air heating/cooling system

FROST CONTROL

- Automatic timed integral exhaust defrost
- Activated by a sensor when the outdoor temperature drops below 18°F (-8°C)

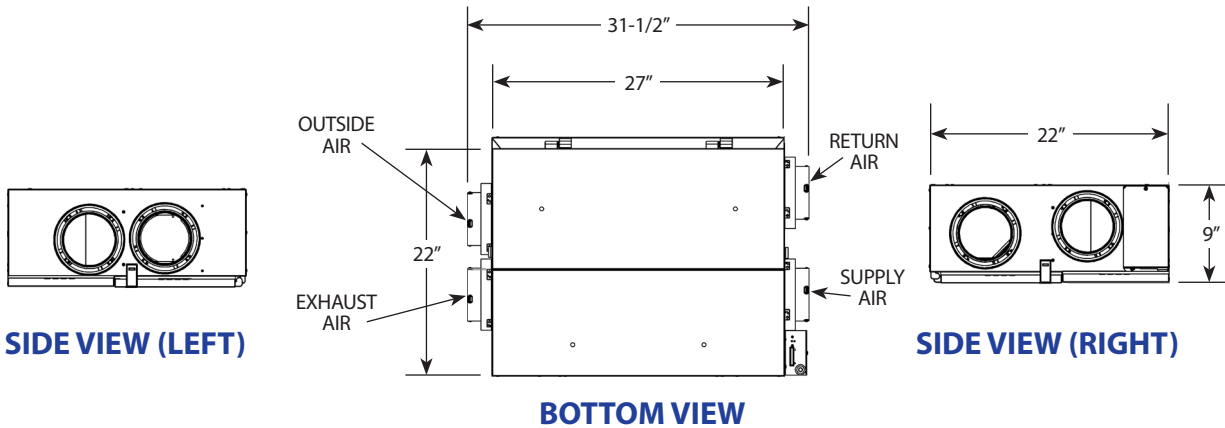
FILTERS

Quantity: 2
Type: MERV 6 (Two replacement filters, P/N: 612415)

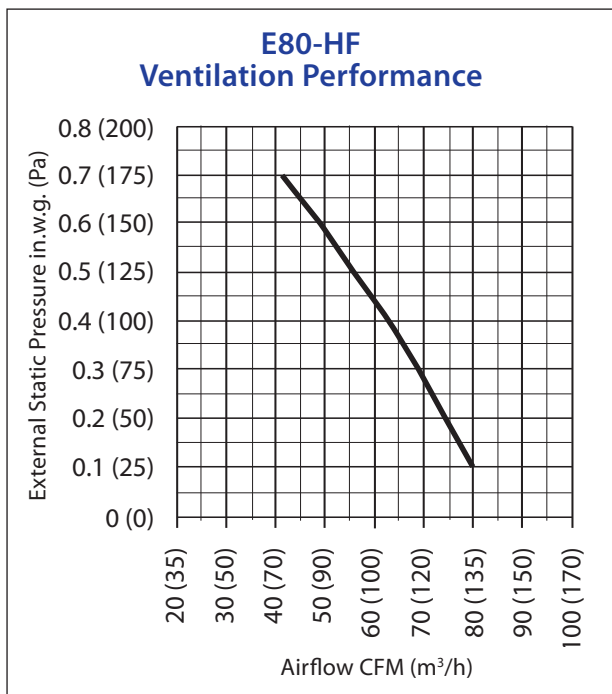
WARRANTY

Core Assembly: Limited 2-year warranty
All Other Covered Components: Limited 5-year warranty

Dimensions



Performance



Recovery Performance – E80-HF								
Supply Temperature		Net Airflow		Power Consumed (W)	Sensible Recovery Efficiency	Apparent Sensible Effectiveness	Latent Transfer	Total Recovery Efficiency
°F	°C	CFM	L/s					
32	0	55	26	32	73%	80%	0.61	--
32	0	67	32	54	70%	78%	0.59	--
32	0	80	38	66	68%	76%	0.55	--
95	35	49	23	49	n/a	74%	0.66	64%



Project:		Architect:	
Location:		Engineer:	
Model #:		Contractor:	
Quantity:		Comments:	
Submitted By:			
Date:			

© 2019 American ALDES Ventilation Corporation. Reproduction or distribution, in whole or in part, of this document, in any form or by any means, without the express written consent of American ALDES Ventilation Corporation, is strictly prohibited. The information contained within this document is subject to change without prior written notice.